



FAMENET

CLLD seminar: Innovation and cooperation

02–04 June, 2026

Pärnu, Estonia

AGENDA: TODAY



**CLLD in
the next
MFF**

**Presentations
from the
working groups**

**Conclusions and
lessons learned**

Lunch

**Fairwells and
goodbyes**

PRACTICAL INFORMATION

The shuttle buses leave

- 12:45 (expected arrival Tallinn Airport 14:45)
- 13:15 (expected arrival Tallinn Airport 15:15)
- 13:45 (expected arrival Tallinn Airport 15:45)



FAMENET

CLLD seminar: Innovation and cooperation

02–04 June, 2026

Pärnu, Estonia

LOG YOUR QUESTIONS!

Please go to slido.com
Use code: 2123 876



Anne COUDEYRE
DG MARE

Hélène LAUERIÈRE
DG REGIO

Iwona LISZTWAN
DG AGRI

CLLD in the next MFF 2028-2034

DG MARE/REGIO/AGRI/EMPL

The Multiannual Financial Framework the Commission's proposal

State of play



Key features of the new MFF

A LARGER, SMARTER, SHARPER EU BUDGET

Larger in scale

EUR 2 trillion (1.26% EU GNI) to match Europe's needs and ambition

- **A larger and more flexible** budget, so Europe can have the **capacity to act – and react – fast** when circumstances change.

Smarter in design

Results oriented, simpler for beneficiaries, more agile

- **Simpler, fewer, more streamlined and consistent** EU financial programmes, so that citizens and companies can easily **find and access funding** opportunities.

Sharper in priorities

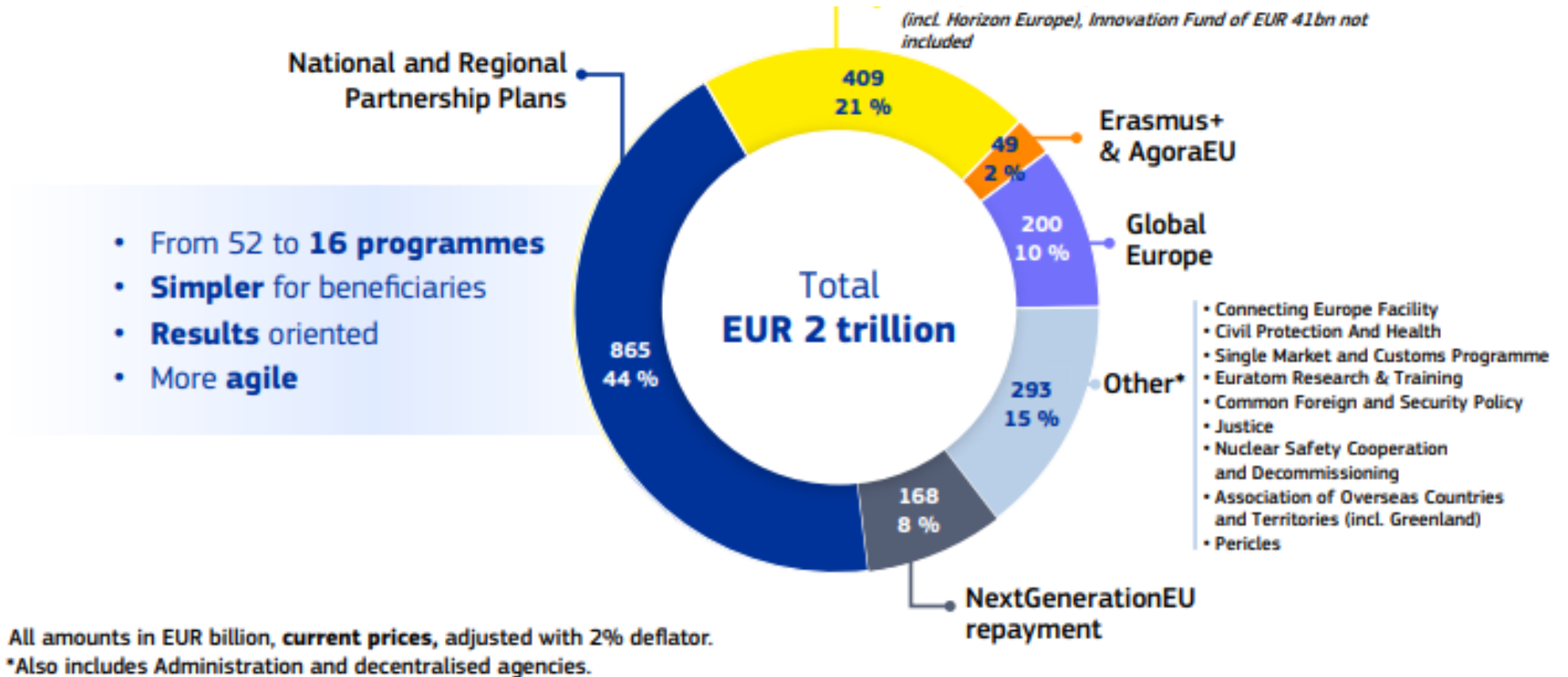
Focus on European priorities

- **More strategic and focused on EU priorities** and projects with the highest **EU added value** such as cross-border infrastructures and innovation.

At least 35% of the EU budget will support projects related to climate and environment.



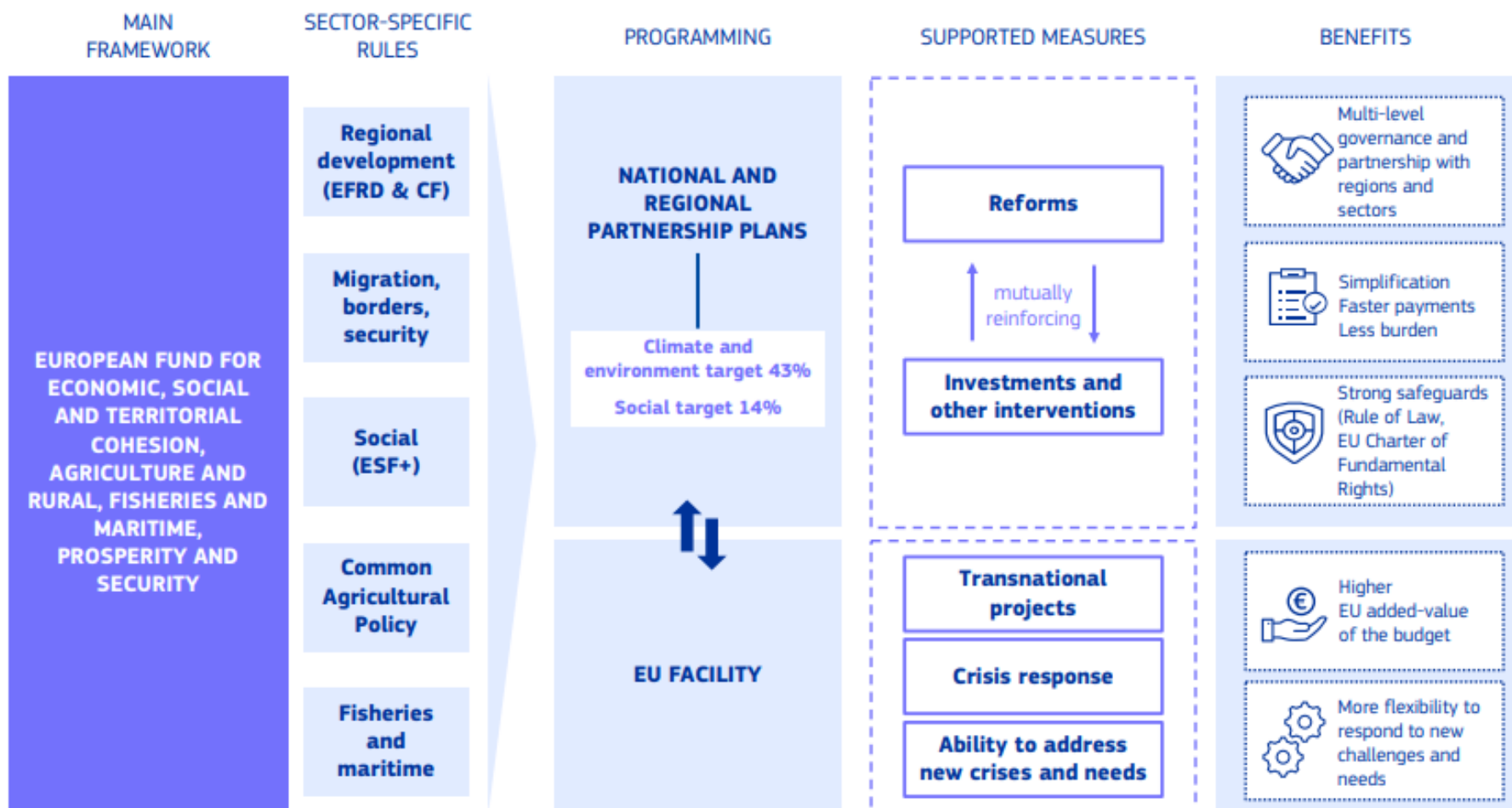
MFF budget 2028-2034



- **€ 865 billion for the European Fund including**
- €453 billion for economic, social and territorial cohesion, including for fisheries and coastal areas.
- € 294 billion ringfenced income support for farmers
- € 2 billion minimum ringfenced allocation to implement some core areas of the common fisheries policy (CFP)
- € 72 billion EU Facility
- € 10 billion Interreg



MFF budget 2028-2034



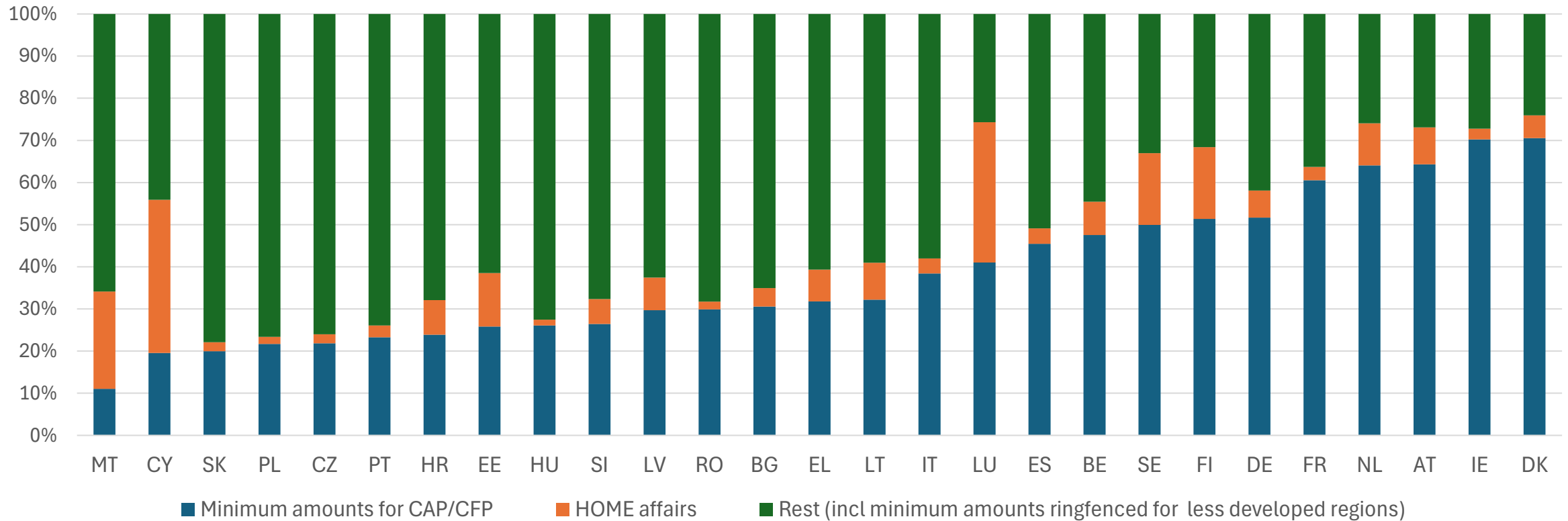
Budget available for CLLD

- The Regulation of the European Fund requires NRP Plans to **contribute effectively to the promotion of cooperation interventions including integrated territorial investment in cities, urban, rural and coastal areas, community-led local development**, or other territorial tools including just transition and smart specialisation strategies, as well as LEADER. Article 22(2)(h).
- CLLD including LEADER will be supported within the overall **non-earmarked envelope of EUR 453 billion** available under the European Fund for economic, social and territorial cohesion, agriculture and rural development, fisheries and maritime affairs, prosperity and security.



Minimum amounts per MS for CAP/CFP

Share of minimum amounts for CAP/CFP within each MS' total grant allocation (excl. SCF and loans)



National and Regional Partnership Plans

Mandatory measure in all member states, at least in rural areas with disadvantage:

Article 35: LEADER as a CAP intervention
Sustainable urban development (ERDF regulation)

According to Member States needs:

Article 74: Territorial and local cooperation initiatives
Article 75: Integrated territorial and urban development
Article 76: Community-led local development
Article 77: Support under LEADER



The long-term budget negotiations

- On 16 July and 3 September 2025, the Commission presented its **proposals** for the next MFF, amounting to almost EUR 2 trillion.
- Discussions on the proposals have since progressed at both technical and political level in the **Council**.
- Discussions are progressing as well on the **Parliament's** side: interim report on the MFF adopted on 28 April, negotiation mandates to be adopted on the sectorial proposals in Nov
- **Negotiations continue with a view to reaching an agreement on the MFF before the end of 2026**, allowing for the timely adoption of the related legislation in 2027.



CLLD in the current programming period

Sector- specific approach



CLLD including LEADER 2021-2027

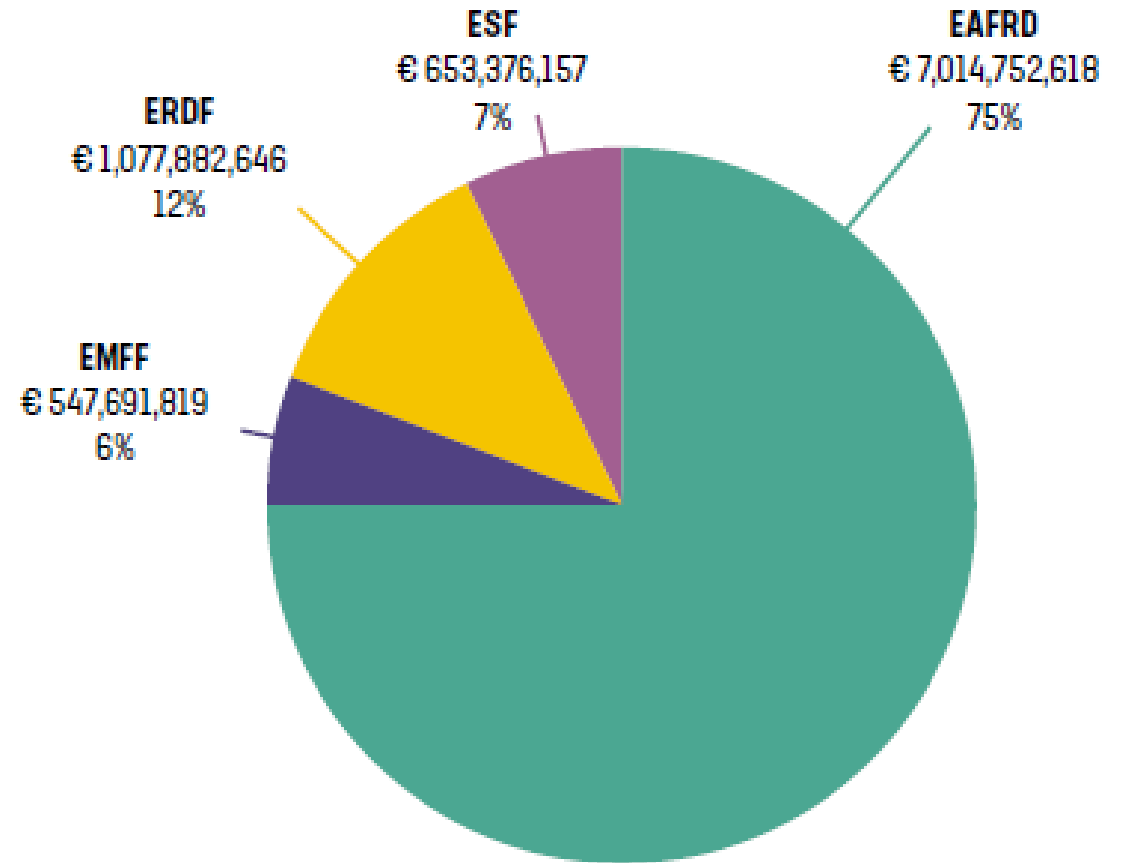
Currently fisheries areas and rural areas often overlap, creating the potential for synergies between instruments to fund the CLLD strategy.

- Today Member States can use up to **four different ESI Funds for CLLD**: EAFRD, EMFAF, ERDF and ESF.
- CLLD can be supported by a single fund or by any combination of funds. However, the **use of multi-fund CLLD in coastal areas is very limited.**
- **Cooperation between the local action groups is common** and even when LAG and FLAG are the same organisation, they manage different local development strategies separately.



CLLD including LEADER

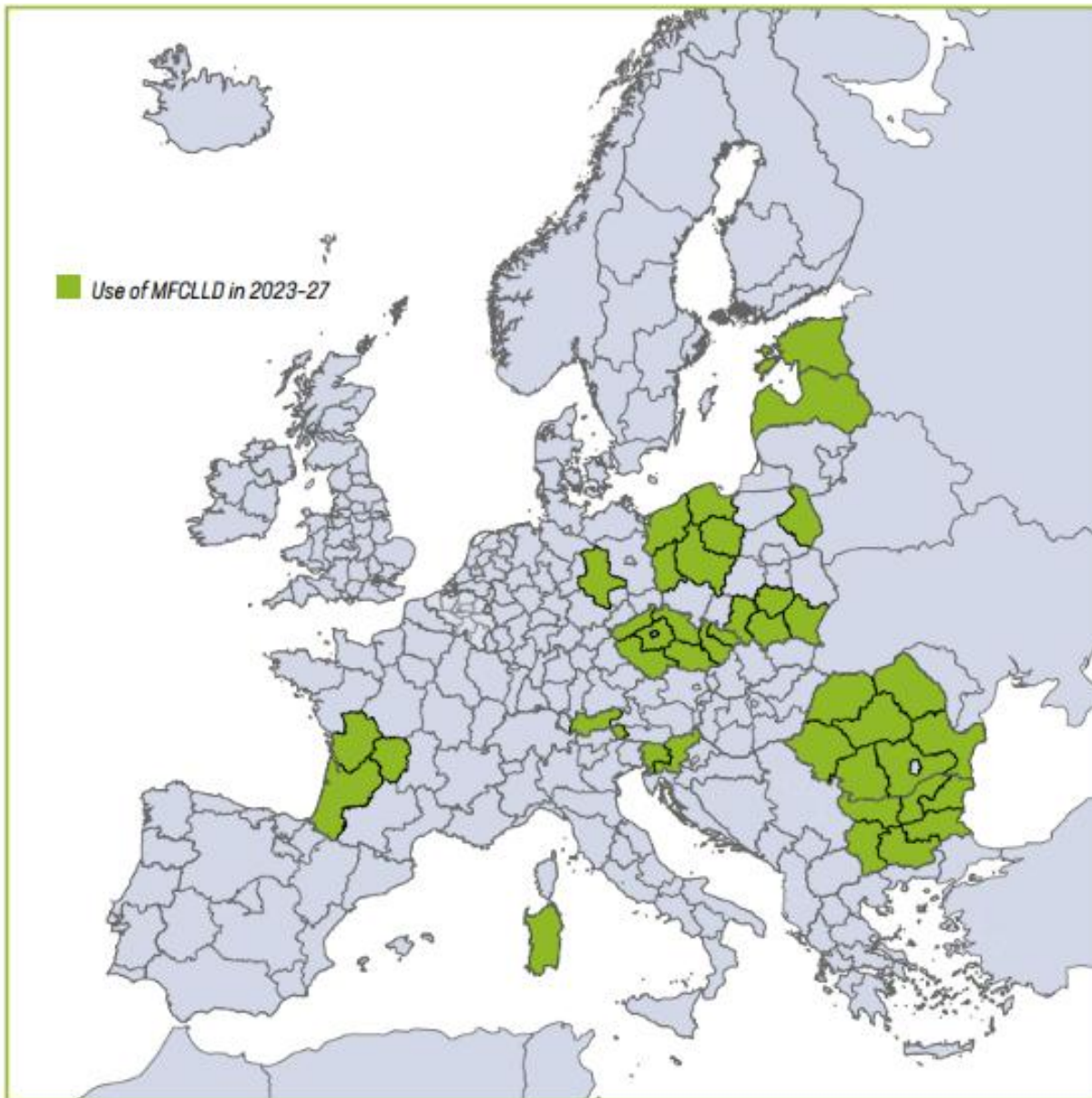
- For the two programming periods 2014-2020 and 2021-2027 over € 9 billion EU funding was allocated to CLLD.
- Three quarters was coming from EAFRD. There are about 2600 LEADER LAGs in rural Europe



Source: EU funds, Cohesion Open Data Platform and programming documents 2014-2020



Multi-funded CLLD 2023-2027



11 MS combine the EAFRD with at least one other fund, resulting in an estimated **891 multi-funded LAGs in 2023-27**

6 countries stopped using MFCLLD: DK, EL, LT, PT, SK, SE.

3 countries started using MFCLLD: EE, FR, and RO. While there are nation-wide models in EE and RO, in FR only one region will use MFCLLD (New Aquitaine).

The fund most combined with the EAFRD is the ESF+.



Multi-funded CLLD example

- The Czech Republic has successfully implemented [a multi-fund, multi-sectoral, and interministerial CLLD model](#) across two programming periods.
- During the current period, **five programmes from five different ministries are integrated into the multi-fund approach**, with all 180 LAGs using multi-fund financing for their projects.
- By combining resources from various operational programmes, **LAGs can more effectively address complex rural development challenges from social inclusion to environmental measures.**
 - **Effective coordination and enabling synergies at the governance level** of the various programmes involved in CLLD are essential.
 - An interesting initiative with strong potential to **strengthen interdisciplinary connections** is the **combination of energy advisory services with social work**. Incorporating environmental topics is viewed as an appealing way to encourage young people to return to rural areas while also promoting intergenerational dialogue.
- A single ministry, the Ministry of Regional Development, leads the overall coordination of LAG strategies.



CLLD including LEADER 2021-2027

Benefits of a Multi-fund CLLD model

- **increased and more diverse financial resources** for LAGs.
- Implementation of a **wider range of activities**
- **broader network of partners and more know-how**

Main Challenge

- complexity and administrative burden** resulting from combining different funds:
- different rules and requirements
 - coordination between the relevant institutions at both regional and national levels

- The use of multi-fund CLLD has been **limited by fragmented rules and administrative complexity**.



CLLD in the next MFF 2028-2034

Integrated approach



The background of the slide features a large, waving European Union flag on the left side, set against a blue sky with light clouds. The flag's yellow stars are clearly visible on its blue field.

Synergies and complementarities:

Looking at challenges in holistic terms, rather than from the point of view of funding sources:

- **brings together different policies** to address the real needs of a specific territory or a sector such as jobs, services, skills, infrastructure, social inclusion, innovation, protection of the environment and quality of life in a coordinated way.
- helps ensure that investments reinforce each other and **maximise impact** for larger groups and more sectors.
- Harmonised rules and a single framework make it easier for the LAGs to **exploit synergies and design coherent strategies**, support innovative local solutions and reduce administrative complexity for beneficiaries.
- **Address cross-border challenges**, such as limited access to healthcare and slow economic development (IMPACT Interreg)



Synergies and complementarities:

The list of shared areas of interest with potential for stronger coordination and exchange is long:

- Food production and local value chains
- Seafood processing
- Business development and SME support
- Tourism and eco-tourism
- Renewable energy and energy efficiency
- Environmental protection and ecosystem restoration
- Climate resilience and coastal adaptation
- Transport and mobility
- Efficient water management
- Port infrastructure
- Digital connectivity and broadband
- Community infrastructure
- Social services, childcare
- Healthcare and community health
- Education, skills and vocational training
- Marine engineering and technical services
- Hospitality and cultural services
- Public services and local accessibility
- Rural and coastal economic diversification
- ...



The background of the slide features a large, waving European Union flag on the left side, set against a blue sky with white clouds. The flag's yellow stars are clearly visible on its blue field.

Synergies and complementarities:

A coastal CLLD strategy to address economic, social, and environmental challenges in an integrated way could for example focus on:

- Supporting small fishing fleets and sustainable aquaculture
- Financing harbour regeneration, cycling routes, and broadband infrastructure
- Supporting training programmes for unemployed youth and women returning to work
- Supporting local food networks linking fisheries, farms, restaurants, and tourism businesses

Together, these actions would aim to improve quality of life, create jobs, strengthen environmental sustainability, and make the coastal territory more attractive for residents, businesses, and visitors.



Preparation of the NRP Plans



Preparation of the NRP Plans

- **Objective:** simplifying programming and ensuring alignment with EU priorities; addressing each Member State's national, regional and local needs and challenges in a tailored, coordinated and effective manner.
 - **One National and Regional Partnership Plan** per MS
- Each MS shall prepare and implement the Plan in partnership with partners, **including regional and local authorities**, and in accordance with their institutional, legal and financial framework.
- The Plan shall include **national, sectoral and, where relevant, regional and territorial chapters.**
- **Member States and regions will design how best to integrate support for CLLD into their Plans**, in line with their specific needs and priorities. It is one of the best examples of using synergies across the policy spectrum and channel CLLD support to cover rural, urban and coastal areas.



Preparation of the NRP Plans

- **The partnership principle remains a core mechanism for implementing EU funds** under shared management.
- **Integrated Programming**
- **Efficient cooperation of authorities** in charge of different sectors in the multi-level governance is needed to achieve these **synergies**.
- **Support for CLLD** may be programmed under one chapter of the NRP Plans (a regional or **territorial** for example) or in several chapters.
- Member States may allocate the available funds in a manner that allows them to **maintain and reinforce fisheries and aquaculture CLLD** in line with the needs of their coastal communities.

Partnership and multi-level governance

(Art 6 of NRP Regulation)



Involvement of partners such as:

- regional, local, urban, rural and other public authorities or associations thereof;
- economic and social partners, including farmers, fishers;
- civil society, such as environmental partners, NGOs, youth organisations, and bodies responsible for promoting social inclusion, fundamental rights, gender equality;
- research organisations and universities

in preparation, implementation and evaluation of the NRP Plan

Preparation of the NRP Plans

What can be done now:

- Continue **focusing on evaluating the benefits and added value of the CLLD instrument** beyond financial support: social capital building, improvement of local governance and better projects quality. This is important in building social resilience and democracy in EU.
- **Strengthen communication, knowledge transfer,** and the articulation of local needs across relevant policy agendas, including improved vertical links between LAGs and specialised departments of ministries, regional authorities, and municipalities.
- **Get involved in the different decision-making processes** with wider national stakeholders for planning and resources.
- Make use of the opportunities under the **simplified EU funding architecture.**
- **Start reflections** on the next programming period: how to position CLLD/LEADER?
- **Start acting on the next programming period** by engaging with different stakeholders in the area, build on the current programming period implementation, use communication of success stories, take part in public consultations, and try to influence the decision-making actors.



Thank you

LOG YOUR QUESTIONS!

**Please go to [slido.com](https://www.slido.com)
Use code: 2123 876**



Anne COUDEYRE
DG MARE

Hélène LAUERIÈRE
DG REGIO

Iwona LISZTWAN
DG AGRI

FAMILY PHOTO





Time for a break
(we start again at 10:45)



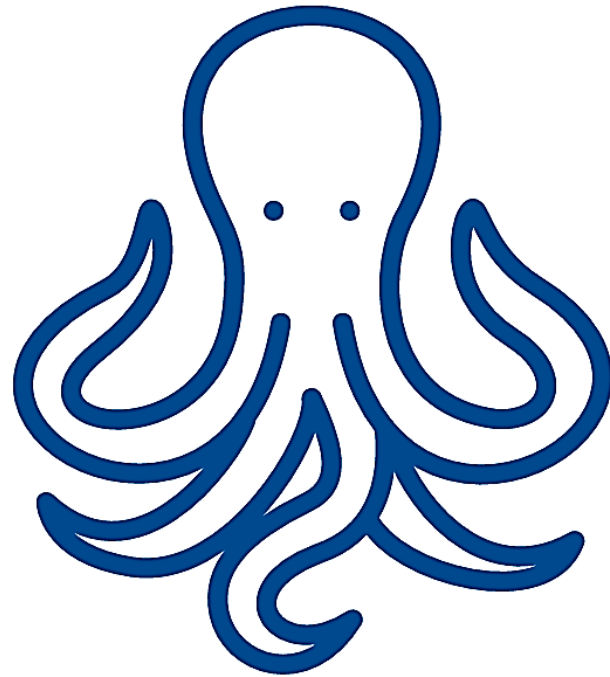
FAMENET

CLLD seminar: Innovation and cooperation

02–04 June, 2026

Pärnu, Estonia

PRESENTATIONS FROM THE WORKING GROUPS



Resort Hotel & Spa
ESTONIA
CONFERENCE CENTER



PRESENTATIONS FROM THE WORKING GROUPS



PRESENTATIONS FROM THE WORKING GROUPS

Verse 1

We came to Pärnu, by the sea,
Loo-king for, inspira-tion.
Talking money, talking plans,
Building futures, hand in hand.

Cultural he-ri-tage, local pride,
Cormorants, flying by the tide.
Tractors rolling, through the land,
FLAGS in ac-tion, hand in hand.

🎵 We all live in a sustainable FLAG,
sustainable FLAG, sustainable FLAG!
We all live in a sustainable FLAG,
sustainable FLAG, sustainable FLAG! 🎵

Verse 2

Net-work, cooperation everywhere,
Power wo-men leading with flair.
Innovaaaa-tion every day!

🎵 We all live in a powerful FLAG,
powerful FLAG, powerful FLAG!
We all live in a powerful FLAG,
powerful FLAG, powerful FLAG! 🎵

PRESENTATIONS FROM THE WORKING GROUPS

Verse 3

Seal meat stories, country style,
Iden-ti-ty that makes us smile.
Added value, small im-pact grows,
That's the way our clus-ter goes.

🎵 We all live in a sustainable FLAG,
sustainable FLAG, sustainable FLAG!
We all live in a powerful FLAG,
powerful e FLAG, powerful FLAG! 🎵

FAME-NET says: "Let's coop-erate!"

Regula-tion says: "Please wait!" 😊

Mon-ey comes and mon-ey goes,
No-bo-dy really knows!

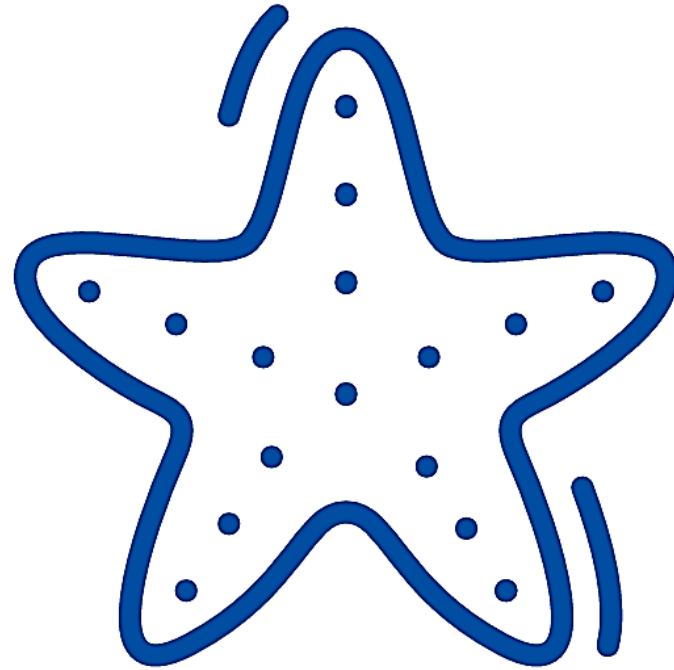
🎵 Pärnu! Pärnu! Here we are!
Buil-ding fu-tures near and far!
FLAGs in ac-tion, proud and free,
A-dded value, in-no-va-tion,
Cooperation is our desti-na-tion!

🎵 Pärnu! Pärnu! Here we are!
Buil-ding fu-tures near and far!
FLAGs in ac-tion, proud and free,
Sustainabi-li-ty by the sea!

PRESENTATIONS FROM THE WORKING GROUPS



PRESENTATIONS FROM THE WORKING GROUPS





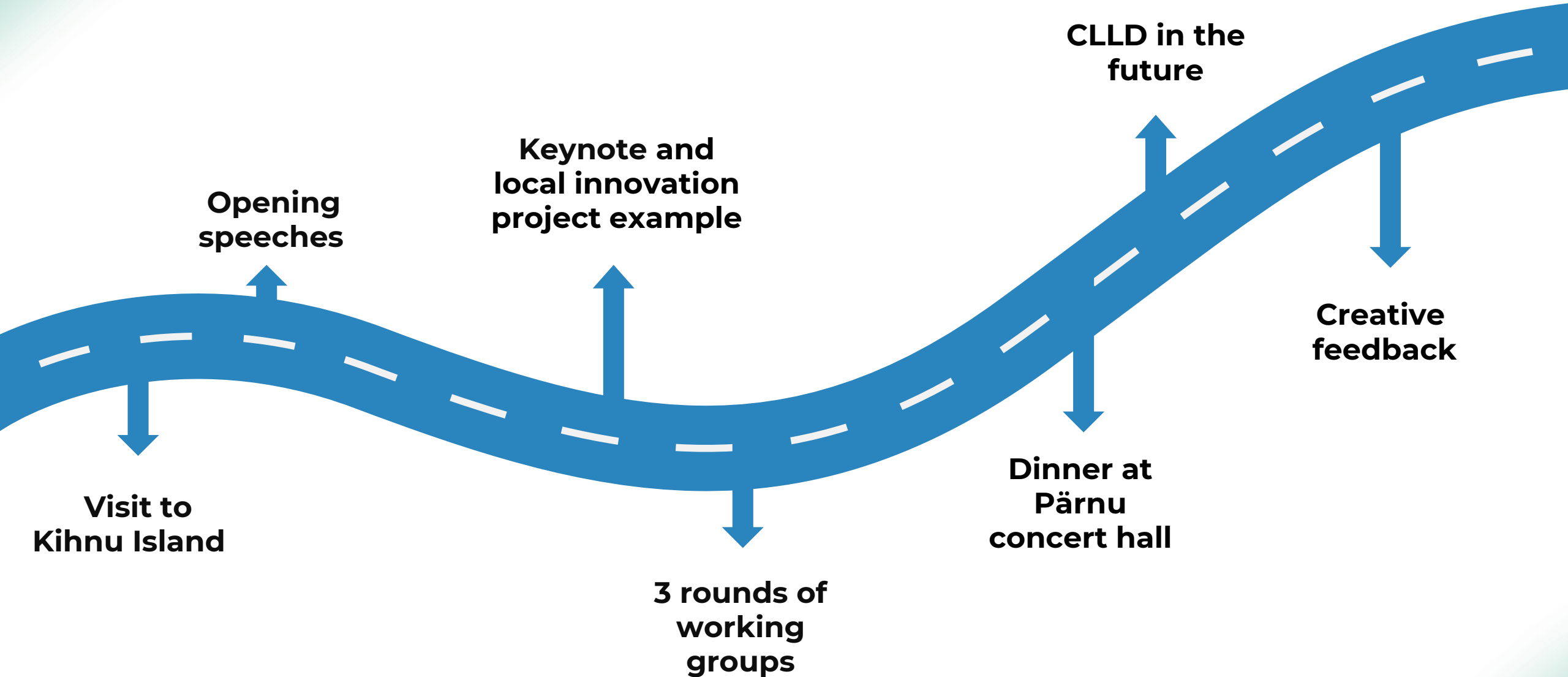
FAMENET

CLLD seminar: Innovation and cooperation

02–04 June, 2026

Pärnu, Estonia

OUR JOURNEY



Opening speeches

Keynote and local innovation project example

CLLD in the future

Creative feedback

Visit to Kihnu Island

3 rounds of working groups

Dinner at Pärnu concert hall

COOPERATION CORNER

LOOKING FOR PROJECTS

LOOKING FOR PARTNERS

CLLD Cooperation Match
Pavia, January - 2020

NAME: Roberta
 MAIL: Roberta.Ceccato@unipa.it
 PHONE: 0321/241111
 COUNTRY: Italy

LOOKING FOR: PROJECT PARTNER STUDY

ABOUT THE COOPERATION:
FILIPINAS TOWARDS
LOW CARBON
TRANSITION
IN THE
PHILIPPINES

CLLD Cooperation Match
Pavia, January - 2020

NAME: Lee Sochee
 MAIL: sochee.leo@unipa.it
 PHONE: 00852 2368 8888
 COUNTRY: HONG KONG

LOOKING FOR: PROJECT PARTNER STUDY

ABOUT THE COOPERATION:
TRANSITION
OF A WASTE
LAB - SMART
WASTE
IN
WASTE
ECOLOGY

CLLD Cooperation Match
Pavia, January - 2020

NAME: Nguyen Thi Thanh
 MAIL: thanh.nguyen@unipa.it
 PHONE: 0084 903 62 62 62
 COUNTRY: Vietnam

LOOKING FOR: PROJECT PARTNER STUDY

ABOUT THE COOPERATION:
Research to control soil
erosion in the
mountainous
region
of
the
mountainous
region

CLLD Cooperation Match
Pavia, January - 2020

NAME: Roberta
 MAIL: Roberta.Ceccato@unipa.it
 PHONE: 0321/241111
 COUNTRY: Italy

LOOKING FOR: PROJECT PARTNER STUDY

ABOUT THE COOPERATION:
Research to control soil
erosion in the
mountainous
region
of
the
mountainous
region

CLLD Cooperation Match
Pavia, January - 2020

NAME: Lucretia
 MAIL: Lucretia.Ceccato@unipa.it
 PHONE: 0321/241111
 COUNTRY: Italy

LOOKING FOR: PROJECT PARTNER STUDY

ABOUT THE COOPERATION:
Research to control soil
erosion in the
mountainous
region
of
the
mountainous
region

CLLD Cooperation Match
Pavia, January - 2020

NAME: Tham
 MAIL: Tham.Ceccato@unipa.it
 PHONE: 0321/241111
 COUNTRY: Italy

LOOKING FOR: PROJECT PARTNER STUDY

ABOUT THE COOPERATION:
Research to control soil
erosion in the
mountainous
region
of
the
mountainous
region

CLLD Cooperation Match
Pavia, January - 2020

NAME: Roberta
 MAIL: Roberta.Ceccato@unipa.it
 PHONE: 0321/241111
 COUNTRY: Italy

LOOKING FOR: PROJECT PARTNER STUDY

ABOUT THE COOPERATION:
Research to control soil
erosion in the
mountainous
region
of
the
mountainous
region

CLLD Cooperation Match
Pavia, January - 2020

NAME: Roberta
 MAIL: Roberta.Ceccato@unipa.it
 PHONE: 0321/241111
 COUNTRY: Italy

LOOKING FOR: PROJECT PARTNER STUDY

ABOUT THE COOPERATION:
Research to control soil
erosion in the
mountainous
region
of
the
mountainous
region

CLLD Cooperation Match
Pavia, January - 2020

NAME: FANENET
 MAIL: FANENET@unipa.it
 PHONE: 0321/241111
 COUNTRY: Italy

LOOKING FOR: PROJECT PARTNER STUDY

ABOUT THE COOPERATION:
Research to control soil
erosion in the
mountainous
region
of
the
mountainous
region

CLLD Cooperation Match
Pavia, January - 2020

NAME: Roberta
 MAIL: Roberta.Ceccato@unipa.it
 PHONE: 0321/241111
 COUNTRY: Italy

LOOKING FOR: PROJECT PARTNER STUDY

ABOUT THE COOPERATION:
Research to control soil
erosion in the
mountainous
region
of
the
mountainous
region

CLLD Cooperation Match
Pavia, January - 2020

NAME: Roberta
 MAIL: Roberta.Ceccato@unipa.it
 PHONE: 0321/241111
 COUNTRY: Italy

LOOKING FOR: PROJECT PARTNER STUDY

ABOUT THE COOPERATION:
Research to control soil
erosion in the
mountainous
region
of
the
mountainous
region

CLLD Cooperation Match
Pavia, January - 2020

NAME: Roberta
 MAIL: Roberta.Ceccato@unipa.it
 PHONE: 0321/241111
 COUNTRY: Italy

LOOKING FOR: PROJECT PARTNER STUDY

ABOUT THE COOPERATION:
Research to control soil
erosion in the
mountainous
region
of
the
mountainous
region

CLLD Cooperation Match
Pavia, January - 2020

NAME: Roberta
 MAIL: Roberta.Ceccato@unipa.it
 PHONE: 0321/241111
 COUNTRY: Italy

LOOKING FOR: PROJECT PARTNER STUDY

ABOUT THE COOPERATION:
Research to control soil
erosion in the
mountainous
region
of
the
mountainous
region

CLLD Cooperation Match
Pavia, January - 2020

NAME: Roberta
 MAIL: Roberta.Ceccato@unipa.it
 PHONE: 0321/241111
 COUNTRY: Italy

LOOKING FOR: PROJECT PARTNER STUDY

ABOUT THE COOPERATION:
Research to control soil
erosion in the
mountainous
region
of
the
mountainous
region

CLLD Cooperation Match
Pavia, January - 2020

NAME: Roberta
 MAIL: Roberta.Ceccato@unipa.it
 PHONE: 0321/241111
 COUNTRY: Italy

LOOKING FOR: PROJECT PARTNER STUDY

ABOUT THE COOPERATION:
Research to control soil
erosion in the
mountainous
region
of
the
mountainous
region

CLLD Cooperation Match
Pavia, January - 2020

NAME: Roberta
 MAIL: Roberta.Ceccato@unipa.it
 PHONE: 0321/241111
 COUNTRY: Italy

LOOKING FOR: PROJECT PARTNER STUDY

ABOUT THE COOPERATION:
Research to control soil
erosion in the
mountainous
region
of
the
mountainous
region

CLLD Cooperation Match
Pavia, January - 2020

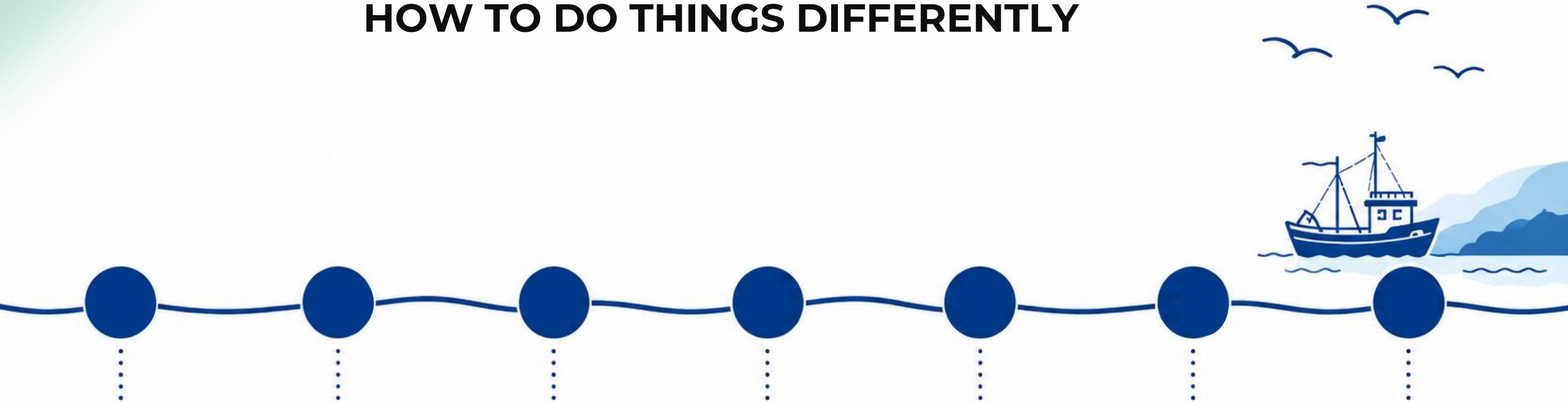
NAME: Roberta
 MAIL: Roberta.Ceccato@unipa.it
 PHONE: 0321/241111
 COUNTRY: Italy

LOOKING FOR: PROJECT PARTNER STUDY

ABOUT THE COOPERATION:
Research to control soil
erosion in the
mountainous
region
of
the
mountainous
region

Lessons learned

HOW TO DO THINGS DIFFERENTLY



Creativity

Risk

Uncertainty

Vulnerability

Bravery

Joy

Fun



FAMENET

CLLD seminar: Innovation and cooperation

02–04 June, 2026

Pärnu, Estonia

EVALUATION

Please go to [menti.com](https://www.menti.com)
Use code: 1427 7283





Lunch and goodbyes



You know where to find us!

events@famenet.eu

www.famenet.eu

